

# (DANRE) irf2bp2b Antibody (N-term)

Purified Rabbit Polyclonal Antibody (Pab)

Catalog # Azb18697a

## Product Information

---

<b>Application</b>	WB, E
<b>Primary Accession</b>	<a href="#">Q7T2G1</a>
<b>Reactivity</b>	Zebrafish
<b>Host</b>	Rabbit
<b>Clonality</b>	Polyclonal
<b>Isotype</b>	Rabbit IgG
<b>Clone Names</b>	RB48037
<b>Calculated MW</b>	53711

## Additional Information

---

<b>Gene ID</b>	406614
<b>Other Names</b>	Interferon regulatory factor 2-binding protein 2-B, IRF-2-binding protein 2-B, IRF-2BP2-B, irf2bp2b, irf2bp2
<b>Target/Specificity</b>	This (DANRE) irf2bp2b antibody is generated from a rabbit immunized with a KLH conjugated synthetic peptide between 73-107 amino acids of DANRE irf2bp2b.
<b>Dilution</b>	WB~~1:1000 E~~Use at an assay dependent concentration.
<b>Format</b>	Purified polyclonal antibody supplied in PBS with 0.09% (W/V) sodium azide. This antibody is purified through a protein A column, followed by peptide affinity purification.
<b>Storage</b>	Maintain refrigerated at 2-8°C for up to 2 weeks. For long term storage store at -20°C in small aliquots to prevent freeze-thaw cycles.
<b>Precautions</b>	(DANRE) irf2bp2b Antibody (N-term) is for research use only and not for use in diagnostic or therapeutic procedures.

## Protein Information

---

<b>Name</b>	irf2bp2b
<b>Synonyms</b>	irf2bp2
<b>Function</b>	Acts as a transcriptional repressor.
<b>Cellular Location</b>	Nucleus.

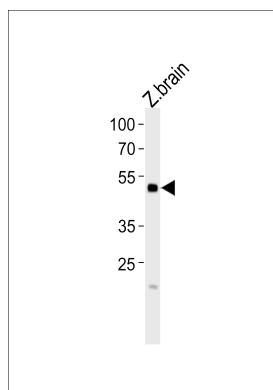
## Background

---

Acts as a transcriptional repressor (By similarity).

## Images

---



Western blot analysis of lysate from zebra fish brain tissue lysate, using (DANRE) irf2bp2b Antibody (N-term)(Cat. #Azb18697a). Azb18697a was diluted at 1:1000. A goat anti-rabbit IgG H&L(HRP) at 1:5000 dilution was used as the secondary antibody. Lysate at 35ug.

Please note: All products are 'FOR RESEARCH USE ONLY. NOT FOR USE IN DIAGNOSTIC OR THERAPEUTIC PROCEDURES'.