

(DANRE) ba2 Antibody (Center)

Purified Rabbit Polyclonal Antibody (Pab)
Catalog # Azb18700c-400 □

Specification

(DANRE) ba2 Antibody (Center) - Product info

| | |
|-------------------|------------------------|
| Application | WB |
| Primary Accession | Q90485 |
| Reactivity | Zebrafish |
| Host | Rabbit |
| Clonality | Polyclonal |
| Isotype | Rabbit IgG |
| Clone Names | RB49940 |

(DANRE) ba2 Antibody (Center) - Additional info

Other Names

Hemoglobin subunit beta-2, Beta-2-globin, Beta-A2-globin,
Hemoglobin beta-2 chain, ba2

Target/Specificity

This (DANRE) ba2 antibody is generated from a rabbit immunized with a KLH conjugated synthetic peptide between 71-104 amino acids of DANRE ba2.

Dilution

WB~1:1000

Format

Purified polyclonal antibody supplied in PBS with 0.09% (W/V) sodium azide. This antibody is purified through a protein A column, followed by peptide affinity purification.

Storage

Maintain refrigerated at 2-8°C for up to 2 weeks. For long term storage store at -20°C in small aliquots to prevent freeze-thaw cycles.

Precautions

(DANRE) ba2 Antibody (Center) is for research use only and not for use in diagnostic or therapeutic procedures.

(DANRE) ba2 Antibody (Center) - Protein Information

Name **ba2**

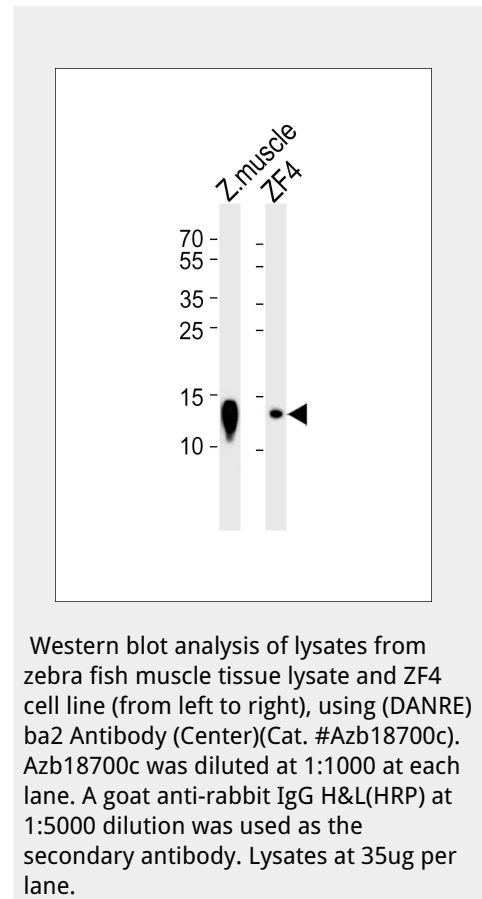
Function

Involved in oxygen transport from gills to the various peripheral tissues.

Tissue Location

Red blood cells..

(DANRE) ba2 Antibody (Center) - Protocols



Provided below are standard protocols that you may find useful for product applications.

- [□Western Blot](#)
- [□Blocking Peptides](#)
- [□Dot Blot](#)
- [□Immunohistochemistry](#)
- [□Immunofluorescence](#)
- [□Immunoprecipitation](#)
- [□Flow Cytometry](#)
- [□Cell Culture](#)

(DANRE) ba2 Antibody (Center) - Background

Involved in oxygen transport from gills to the various peripheral tissues.

(DANRE) ba2 Antibody (Center) - References

Chan F.-Y., et al. Blood 89:688-700(1997). Howe K., et al. Nature 496:498-503(2013).