

(DANRE) ada Antibody (Center)

Purified Rabbit Polyclonal Antibody (Pab)

Catalog # Azb18702c

Product Information

Application	WB, E
Primary Accession	Q6DG22
Reactivity	Zebrafish
Host	Rabbit
Clonality	Polyclonal
Isotype	Rabbit IgG
Clone Names	RB47223
Calculated MW	40844

Additional Information

Gene ID	436919
Other Names	Adenosine deaminase, Adenosine aminohydrolase, ada
Target/Specificity	This (DANRE) ada antibody is generated from a rabbit immunized with a KLH conjugated synthetic peptide between 114-148 amino acids of DANRE ADA.
Dilution	WB~~1:1000 E~~Use at an assay dependent concentration.
Format	Purified polyclonal antibody supplied in PBS with 0.09% (W/V) sodium azide. This antibody is purified through a protein A column, followed by peptide affinity purification.
Storage	Maintain refrigerated at 2-8°C for up to 2 weeks. For long term storage store at -20°C in small aliquots to prevent freeze-thaw cycles.
Precautions	(DANRE) ada Antibody (Center) is for research use only and not for use in diagnostic or therapeutic procedures.

Protein Information

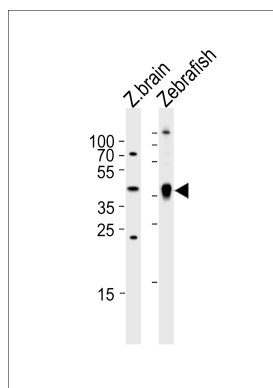
Name	ada
Function	Catalyzes the hydrolytic deamination of adenosine and 2- deoxyadenosine. Plays an important role in purine metabolism and in adenosine homeostasis. Modulates signaling by extracellular adenosine, and so contributes indirectly to cellular signaling events. May act as a positive regulator of T-cell coactivation (By similarity).
Cellular Location	Cell membrane {ECO:0000250 UniProtKB:P00813}; Peripheral membrane

protein; Extracellular side. Cell junction {ECO:0000250|UniProtKB:P00813}
Cytoplasmic vesicle lumen {ECO:0000250|UniProtKB:P03958}. Cytoplasm.
Lysosome {ECO:0000250|UniProtKB:P00813}

Background

Catalyzes the hydrolytic deamination of adenosine and 2- deoxyadenosine. Plays an important role in purine metabolism and in adenosine homeostasis. Modulates signaling by extracellular adenosine, and so contributes indirectly to cellular signaling events. May act as a positive regulator of T-cell coactivation (By similarity).

Images



Western blot analysis of lysates from zebra fish brain and Zebrafish tissue lysate (from left to right), using (DANRE) ada Antibody (Center)(Cat. #Azb18702c). Azb18702c was diluted at 1:1000 at each lane. A goat anti-rabbit IgG H&L(HRP) at 1:5000 dilution was used as the secondary antibody. Lysates at 35ug per lane.

Please note: All products are 'FOR RESEARCH USE ONLY. NOT FOR USE IN DIAGNOSTIC OR THERAPEUTIC PROCEDURES'.