

(DANRE) papl Antibody (C-term)

Purified Rabbit Polyclonal Antibody (Pab)

Catalog # Azb18704c

Product Information

Application	WB, E
Primary Accession	A5D6U8
Reactivity	Zebrafish
Host	Rabbit
Clonality	Polyclonal
Isotype	Rabbit IgG
Clone Names	RB47058
Calculated MW	50745

Additional Information

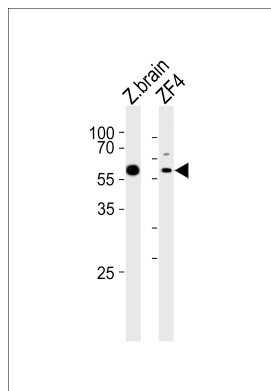
Gene ID	571830
Other Names	Iron/zinc purple acid phosphatase-like protein, papl
Target/Specificity	This (DANRE) papl antibody is generated from a rabbit immunized with a KLH conjugated synthetic peptide between 378-413 amino acids of DANRE papl.
Dilution	WB~~1:1000 E~~Use at an assay dependent concentration.
Format	Purified polyclonal antibody supplied in PBS with 0.09% (W/V) sodium azide. This antibody is purified through a protein A column, followed by peptide affinity purification.
Storage	Maintain refrigerated at 2-8°C for up to 2 weeks. For long term storage store at -20°C in small aliquots to prevent freeze-thaw cycles.
Precautions	(DANRE) papl Antibody (C-term) is for research use only and not for use in diagnostic or therapeutic procedures.

Protein Information

Name	acp7 {ECO:0000250 UniProtKB:Q6ZNF0}
Cellular Location	Secreted.

Images

Western blot analysis of lysates from zebra fish brain, ZF4



tissue lysate (from left to right), using (DANRE) papl Antibody (C-term)(Cat. #Azb18704c). Azb18704c was diluted at 1:1000 at each lane. A goat anti-rabbit IgG H&L(HRP) at 1:5000 dilution was used as the secondary antibody. Lysates at 35ug per lane.

Please note: All products are 'FOR RESEARCH USE ONLY. NOT FOR USE IN DIAGNOSTIC OR THERAPEUTIC PROCEDURES'.