

# (DANRE) hoxb6a Antibody (Center)

Purified Rabbit Polyclonal Antibody (Pab)

Catalog # Azb18707c

## Product Information

---

<b>Application</b>	WB, E
<b>Primary Accession</b>	<a href="#">P15861</a>
<b>Reactivity</b>	Zebrafish
<b>Host</b>	Rabbit
<b>Clonality</b>	Polyclonal
<b>Isotype</b>	Rabbit IgG
<b>Clone Names</b>	RB49670
<b>Calculated MW</b>	26088

## Additional Information

---

<b>Gene ID</b>	30341
<b>Other Names</b>	Homeobox protein Hox-B6a, Hox-B6, Homeobox protein Zf-22, hoxb6a, hox-b6, hoxb6, zf22
<b>Target/Specificity</b>	This (DANRE) hoxb6a antibody is generated from a rabbit immunized with a KLH conjugated synthetic peptide between 98-131 amino acids of DANRE hoxb6a.
<b>Dilution</b>	WB~~1:1000 E~~Use at an assay dependent concentration.
<b>Format</b>	Purified polyclonal antibody supplied in PBS with 0.09% (W/V) sodium azide. This antibody is purified through a protein A column, followed by peptide affinity purification.
<b>Storage</b>	Maintain refrigerated at 2-8°C for up to 2 weeks. For long term storage store at -20°C in small aliquots to prevent freeze-thaw cycles.
<b>Precautions</b>	(DANRE) hoxb6a Antibody (Center) is for research use only and not for use in diagnostic or therapeutic procedures.

## Protein Information

---

<b>Name</b>	hoxb6a
<b>Synonyms</b>	hox-b6, hoxb6, zf22
<b>Function</b>	Sequence-specific transcription factor which is part of a developmental regulatory system that provides cells with specific positional identities on the anterior-posterior axis.

## Background

---

Sequence-specific transcription factor which is part of a developmental regulatory system that provides cells with specific positional identities on the anterior-posterior axis.

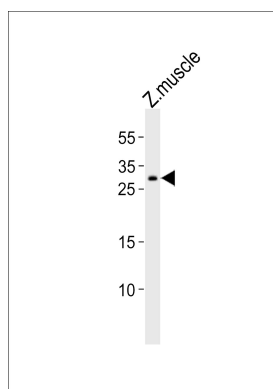
## References

---

Njolstad P.R.,et al.EMBO J. 9:515-524(1990).  
Molven A.,et al.Biochim. Biophys. Acta 1173:102-106(1993).  
Howe K.,et al.Nature 496:498-503(2013).  
Corredor-Adamez M.,et al.Evol. Dev. 7:362-375(2005).  
Prince V.E.,et al.Development 125:407-420(1998).

## Images

---



Western blot analysis of lysate from zebra fish muscle tissue lysate, using (DANRE) *hoxb6a* Antibody (Center)(Cat. #Azb18707c). Azb18707c was diluted at 1:1000. A goat anti-rabbit IgG H&L(HRP) at 1:5000 dilution was used as the secondary antibody. Lysate at 35ug.

Please note: All products are 'FOR RESEARCH USE ONLY. NOT FOR USE IN DIAGNOSTIC OR THERAPEUTIC PROCEDURES'.