

(DANRE) pkn2 Antibody (N-term)

Purified Rabbit Polyclonal Antibody (Pab)

Catalog # Azb18708a

Product Information

Application	WB, E
Primary Accession	A7MBL8
Reactivity	Zebrafish
Host	Rabbit
Clonality	Polyclonal
Isotype	Rabbit IgG
Clone Names	RB50147
Calculated MW	110657

Additional Information

Gene ID	567134
Other Names	Serine/threonine-protein kinase N2, PKN gamma, Protein kinase C-like 2, Protein-kinase C-related kinase 2, pkn2, prk2, prkcl2
Target/Specificity	This (DANRE) pkn2 antibody is generated from a rabbit immunized with a KLH conjugated synthetic peptide between 108-141 amino acids DANRE pkn2.
Dilution	WB~~1:1000 E~~Use at an assay dependent concentration.
Format	Purified polyclonal antibody supplied in PBS with 0.09% (W/V) sodium azide. This antibody is purified through a protein A column, followed by peptide affinity purification.
Storage	Maintain refrigerated at 2-8°C for up to 2 weeks. For long term storage store at -20°C in small aliquots to prevent freeze-thaw cycles.
Precautions	(DANRE) pkn2 Antibody (N-term) is for research use only and not for use in diagnostic or therapeutic procedures.

Protein Information

Name	pkn2
Synonyms	prk2, prkcl2
Function	Pkc-related serine/threonine-protein kinase and Rho/Rac effector protein that participates in specific signal transduction responses in the cell. May play a role in the regulation of cell cycle progression, actin cytoskeleton assembly, cell migration, cell adhesion and transcription activation signaling processes

(By similarity).

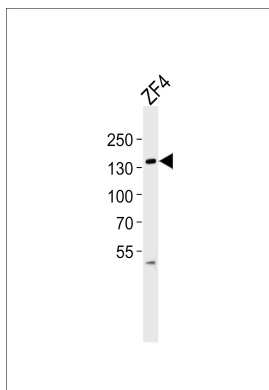
Cellular Location

Cytoplasm. Nucleus. Membrane. Cell projection, lamellipodium Cytoplasm, cytoskeleton. Cleavage furrow Midbody. Cell junction

Background

Pkc-related serine/threonine-protein kinase and Rho/Rac effector protein that participates in specific signal transduction responses in the cell. May play a role in the regulation of cell cycle progression, actin cytoskeleton assembly, cell migration, cell adhesion and transcription activation signaling processes (By similarity).

Images



Western blot analysis of lysate from ZF4 cell line, using (DANRE) pkn2 Antibody (N-term)(Cat. #Azb18708a). Azb18708a was diluted at 1:1000. A goat anti-rabbit IgG H&L(HRP) at 1:5000 dilution was used as the secondary antibody. Lysate at 35ug.

Please note: All products are 'FOR RESEARCH USE ONLY. NOT FOR USE IN DIAGNOSTIC OR THERAPEUTIC PROCEDURES'.