

DANRE mycl1a Antibody (N-term)

Purified Rabbit Polyclonal Antibody (Pab)

Catalog # Azb18711a

Product Information

| | |
|-------------------|------------------------|
| Application | WB, E |
| Primary Accession | Q9PSI9 |
| Reactivity | Zebrafish |
| Host | Rabbit |
| Clonality | Polyclonal |
| Isotype | Rabbit IgG |
| Clone Names | RB47640 |
| Calculated MW | 41380 |

Additional Information

| | |
|--------------------|--|
| Gene ID | 405873 |
| Other Names | Protein L-Myc-1a, Protein L-Myc 1, zL-Myc, mycl1a {ECO:0000312 EMBL:AAH677231}, lmyc1, mycl1 |
| Target/Specificity | This DANRE mycl1a antibody is generated from a rabbit immunized with a KLH conjugated synthetic peptide between 80-113 amino acids from the N-terminal region of human DANRE mycl1a. |
| Dilution | WB~~1:1000 E~~Use at an assay dependent concentration. |
| Format | Purified polyclonal antibody supplied in PBS with 0.09% (W/V) sodium azide. This antibody is purified through a protein A column, followed by peptide affinity purification. |
| Storage | Maintain refrigerated at 2-8°C for up to 2 weeks. For long term storage store at -20°C in small aliquots to prevent freeze-thaw cycles. |
| Precautions | DANRE mycl1a Antibody (N-term) is for research use only and not for use in diagnostic or therapeutic procedures. |

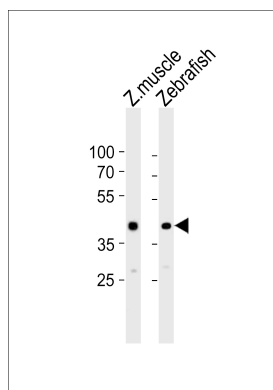
Protein Information

| | |
|-------------------|--|
| Name | mycl1a {ECO:0000312 EMBL:AAH67723.1} |
| Synonyms | lmyc1, mycl1 |
| Cellular Location | Nucleus {ECO:0000250 UniProtKB:P12524, ECO:0000255 PROSITE-ProRule:PRU00981} |

References

Schreiber-Agus N.,et al.Mol. Cell. Biol. 13:2765-2775(1993).

Images



Western blot analysis of lysates from zebra fish muscle, Zebrafish tissue lysate (from left to right), using DANRE mycl1a Antibody (N-term)(Cat. #Azb18711a). Azb18711a was diluted at 1:1000 at each lane. A goat anti-rabbit IgG H&L(HRP) at 1:5000 dilution was used as the secondary antibody. Lysates at 35ug per lane.

Please note: All products are 'FOR RESEARCH USE ONLY. NOT FOR USE IN DIAGNOSTIC OR THERAPEUTIC PROCEDURES'.