

(DANRE) ankrd13c Antibody (C-term)

Purified Rabbit Polyclonal Antibody (Pab)

Catalog # Azb18714c

Product Information

Application	WB, E
Primary Accession	Q7ZUV0
Reactivity	Zebrafish
Host	Rabbit
Clonality	Polyclonal
Isotype	Rabbit IgG
Clone Names	RB47008
Calculated MW	55478

Additional Information

Gene ID	325167
Other Names	Ankyrin repeat domain-containing protein 13C, ankrd13c
Target/Specificity	This (DANRE) ankrd13c antibody is generated from a rabbit immunized with a KLH conjugated synthetic peptide between 475-508 amino acids of DANRE ankrd13c.
Dilution	WB~~1:1000 E~~Use at an assay dependent concentration.
Format	Purified polyclonal antibody supplied in PBS with 0.09% (W/V) sodium azide. This antibody is purified through a protein A column, followed by peptide affinity purification.
Storage	Maintain refrigerated at 2-8°C for up to 2 weeks. For long term storage store at -20°C in small aliquots to prevent freeze-thaw cycles.
Precautions	(DANRE) ankrd13c Antibody (C-term) is for research use only and not for use in diagnostic or therapeutic procedures.

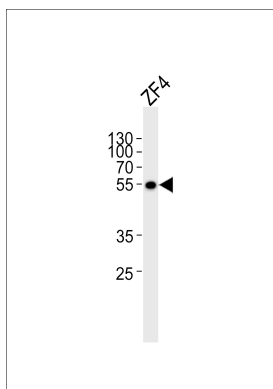
Protein Information

Name	ankrd13c
Function	Acts as a molecular chaperone for G protein-coupled receptors, regulating their biogenesis and exit from the ER.
Cellular Location	Endoplasmic reticulum membrane. Note=Associated with the cytosolic side.

Background

Acts as a molecular chaperone for G protein-coupled receptors, regulating their biogenesis and exit from the ER (By similarity).

Images



Western blot analysis of lysate from ZF4 cell line, using (DANRE) ankrd13c Antibody (C-term)(Cat. #Azb18714c). Azb18714c was diluted at 1:1000. A goat anti-rabbit IgG H&L(HRP) at 1:5000 dilution was used as the secondary antibody. Lysate at 35ug.

Please note: All products are 'FOR RESEARCH USE ONLY. NOT FOR USE IN DIAGNOSTIC OR THERAPEUTIC PROCEDURES'.