

## (DANRE) zte25 Antibody (N-term)

Purified Rabbit Polyclonal Antibody (Pab)

Catalog # Azb18715a

### Product Information

---

<b>Application</b>	WB, E
<b>Primary Accession</b>	<a href="#">A6H8T7</a>
<b>Reactivity</b>	Zebrafish
<b>Host</b>	Rabbit
<b>Clonality</b>	Polyclonal
<b>Isotype</b>	Rabbit IgG
<b>Clone Names</b>	RB47039
<b>Calculated MW</b>	82236

### Additional Information

---

<b>Other Names</b>	Cytosolic carboxypeptidase 2, 3417-, ATP/GTP-binding protein-like 2, Testis-expressed protein 25, zte25, agbl2, ccp2
<b>Target/Specificity</b>	This (DANRE) zte25 antibody is generated from a rabbit immunized with a KLH conjugated synthetic peptide between 92-126 amino acids of DANRE zte25.
<b>Dilution</b>	WB~~1:1000 E~~Use at an assay dependent concentration.
<b>Format</b>	Purified polyclonal antibody supplied in PBS with 0.09% (W/V) sodium azide. This antibody is purified through a protein A column, followed by peptide affinity purification.
<b>Storage</b>	Maintain refrigerated at 2-8°C for up to 2 weeks. For long term storage store at -20°C in small aliquots to prevent freeze-thaw cycles.
<b>Precautions</b>	(DANRE) zte25 Antibody (N-term) is for research use only and not for use in diagnostic or therapeutic procedures.

### Protein Information

---

<b>Name</b>	zte25
<b>Synonyms</b>	agbl2, ccp2
<b>Function</b>	Metalloprotease that mediates deglutamylation of target proteins. Catalyzes the deglutamylation of polyglutamate side chains generated by post-translational polyglutamylation in proteins such as tubulins. Also removes gene-encoded polyglutamates from the carboxy-terminus of target proteins such as MYLK. Does not show dephosphorylation or deglycosylase activities from the carboxy-terminus of tubulin.

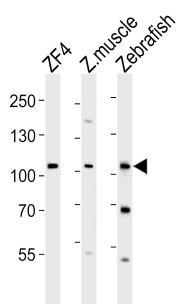
## Cellular Location

Cytoplasm, cytosol {ECO:0000250|UniProtKB:Q8CDK2}. Cytoplasm, cytoskeleton, microtubule organizing center, centrosome, centriole {ECO:0000250|UniProtKB:Q5U5Z8}. Cytoplasm, cytoskeleton, cilium basal body {ECO:0000250|UniProtKB:Q5U5Z8}. Note=Colocalizes with gamma-tubulin in the centrioles and with glutamylated tubulin in the basal bodies of ciliated cells. {ECO:0000250|UniProtKB:Q5U5Z8}

## Background

Metalloprotease involved in the dephosphorylation of alpha-tubulin C-terminus (By similarity).

## Images



Western blot analysis of lysates from ZF4 cell line, zebra fish muscle, Zebrafish tissue lysate(from left to right), using (DANRE) zte25 Antibody (N-term)(Cat. #Azb18715a). Azb18715a was diluted at 1:1000 at each lane. A goat anti-rabbit IgG H&L(HRP) at 1:10000 dilution was used as the secondary antibody. Lysates at 35ug per lane.

Please note: All products are 'FOR RESEARCH USE ONLY. NOT FOR USE IN DIAGNOSTIC OR THERAPEUTIC PROCEDURES'.