

# (DANRE) mapk8 Antibody

Purified Rabbit Polyclonal Antibody (Pab)

Catalog # Azb18717a

## Product Information

---

Application	WB, E
Primary Accession	<a href="#">Q9DGD9</a>
Reactivity	Zebrafish
Host	Rabbit
Clonality	Polyclonal
Isotype	Rabbit IgG
Clone Names	RB43120
Calculated MW	44140

## Additional Information

---

Gene ID	65236
Other Names	Mitogen-activated protein kinase 8, MAP kinase 8, MAPK 8, Stress-activated protein kinase JNK1, c-Jun N-terminal kinase 1, mapk8, jnk1
Target/Specificity	This DANRE mapk8 antibody is generated from a rabbit immunized with a KLH conjugated synthetic peptide between 183-215 amino acids from the human region of DANRE mapk8.
Dilution	WB~~1:1000 E~~Use at an assay dependent concentration.
Format	Purified polyclonal antibody supplied in PBS with 0.09% (W/V) sodium azide. This antibody is purified through a protein A column, followed by peptide affinity purification.
Storage	Maintain refrigerated at 2-8°C for up to 2 weeks. For long term storage store at -20°C in small aliquots to prevent freeze-thaw cycles.
Precautions	(DANRE) mapk8 Antibody is for research use only and not for use in diagnostic or therapeutic procedures.

## Protein Information

---

Name	mapk8
Synonyms	jnk1
Function	Responds to activation by environmental stress and pro- inflammatory cytokines by phosphorylating a number of transcription factors, primarily components of AP-1 such as c-Jun and ATF2 and thus regulates AP-1

transcriptional activity. May play a role in the regulation of the circadian clock.

## Cellular Location

Cytoplasm {ECO:0000250|UniProtKB:P49185}. Nucleus {ECO:0000250|UniProtKB:Q91Y86}. Synapse {ECO:0000250|UniProtKB:P49185}

## Background

---

Responds to activation by environmental stress and pro- inflammatory cytokines by phosphorylating a number of transcription factors, primarily components of AP-1 such as c-Jun and ATF2 and thus regulates AP-1 transcriptional activity (By similarity).

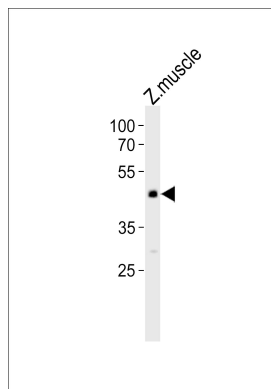
## References

---

Fujii R.,et al.J. Cell Biol. 150:1335-1348(2000).

## Images

---



Western blot analysis of lysate from zebra fish muscle tissue lysate, using (DANRE) mapk8 Antibody (Cat. #Az18717a). Az18717a was diluted at 1:1000. A goat anti-rabbit IgG H&L(HRP) at 1:10000 dilution was used as the secondary antibody. Lysate at 35ug.

Please note: All products are 'FOR RESEARCH USE ONLY. NOT FOR USE IN DIAGNOSTIC OR THERAPEUTIC PROCEDURES'.