

(DANRE) mylipb Antibody (C-term)

Purified Rabbit Polyclonal Antibody (Pab)

Catalog # Azb18718c

Product Information

| | |
|-------------------|------------------------|
| Application | WB, E |
| Primary Accession | Q05AK5 |
| Reactivity | Zebrafish |
| Host | Rabbit |
| Clonality | Polyclonal |
| Isotype | Rabbit IgG |
| Clone Names | RB47051 |
| Calculated MW | 52661 |

Additional Information

| | |
|--------------------|---|
| Gene ID | 565911 |
| Other Names | E3 ubiquitin-protein ligase MYLIP-B, 632-, Myosin regulatory light chain-interacting protein B, MIR-B, mylipb {ECO:0000312 ZFIN:ZDB-GENE-061027-67} |
| Target/Specificity | This DANRE mylipb antibody is generated from a rabbit immunized with a KLH conjugated synthetic peptide between 440-475 amino acids from the C-terminal region of DANRE mylipb. |
| Dilution | WB~~1:1000 E~~Use at an assay dependent concentration. |
| Format | Purified polyclonal antibody supplied in PBS with 0.09% (W/V) sodium azide. This antibody is purified through a protein A column, followed by peptide affinity purification. |
| Storage | Maintain refrigerated at 2-8°C for up to 2 weeks. For long term storage store at -20°C in small aliquots to prevent freeze-thaw cycles. |
| Precautions | (DANRE) mylipb Antibody (C-term) is for research use only and not for use in diagnostic or therapeutic procedures. |

Protein Information

| | |
|----------|---|
| Name | mylipb {ECO:0000312 ZFIN:ZDB-GENE-061027-67} |
| Function | E3 ubiquitin-protein ligase that mediates ubiquitination and subsequent proteasomal degradation of myosin regulatory light chain (MRLC). Regulates cell movements during gastrulation by acting downstream of fz7 to antagonize the frizzled-signaling pathway (By similarity). |

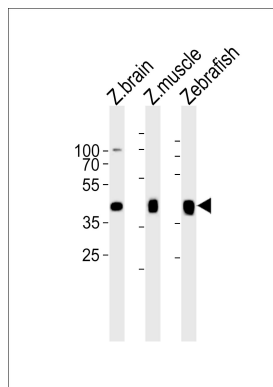
Cellular Location

Cytoplasm, cytosol {ECO:0000250|UniProtKB:Q6TEM9}

Background

E3 ubiquitin-protein ligase that mediates ubiquitination and subsequent proteasomal degradation of myosin regulatory light chain (MRLC). Regulates cell movements during gastrulation by acting downstream of fz7 to antagonize the frizzled-signaling pathway (By similarity).

Images



Western blot analysis of lysates from zebra fish brain, zebra fish muscle, Zebrafish tissue lysate (from left to right), using (DANRE) mylipb Antibody (C-term)(Cat. #Azb18718c). Azb18718c was diluted at 1:1000 at each lane. A goat anti-rabbit IgG H&L(HRP) at 1:10000 dilution was used as the secondary antibody. Lysates at 35ug per lane.

Please note: All products are 'FOR RESEARCH USE ONLY. NOT FOR USE IN DIAGNOSTIC OR THERAPEUTIC PROCEDURES'.