

## (DANRE) edc3 Antibody (Center)

Purified Rabbit Polyclonal Antibody (Pab)

Catalog # Azb18719a

### Product Information

---

Application	WB, E
Primary Accession	<a href="#">Q502M5</a>
Reactivity	Zebrafish
Host	Rabbit
Clonality	Polyclonal
Isotype	Rabbit IgG
Clone Names	RB47052
Calculated MW	54852

### Additional Information

---

Other Names	Enhancer of mRNA-decapping protein 3, LSM16 protein homolog, YjeF domain-containing protein 1, edc3, lsm16, yjdc
Target/Specificity	This (DANRE) edc3 antibody is generated from a rabbit immunized with a KLH conjugated synthetic peptide between 162-197 amino acids from the Central region of (DANRE) edc3.
Dilution	WB~~1:1000 E~~Use at an assay dependent concentration.
Format	Purified polyclonal antibody supplied in PBS with 0.09% (W/V) sodium azide. This antibody is purified through a protein A column, followed by peptide affinity purification.
Storage	Maintain refrigerated at 2-8°C for up to 2 weeks. For long term storage store at -20°C in small aliquots to prevent freeze-thaw cycles.
Precautions	(DANRE) edc3 Antibody (Center) is for research use only and not for use in diagnostic or therapeutic procedures.

### Protein Information

---

Name	edc3
Synonyms	lsm16, yjdc
Function	Binds single-stranded RNA. Involved in the process of mRNA degradation and in the positive regulation of mRNA decapping (By similarity).
Cellular Location	Cytoplasm, P-body. Note=Processing bodies (PB).

## Background

---

Binds single-stranded RNA. In the process of mRNA degradation, may play a role in mRNA decapping (By similarity).

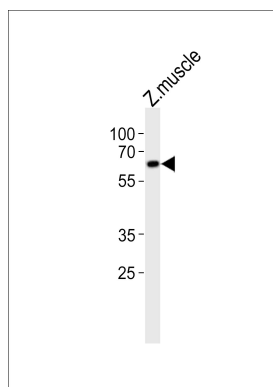
## References

---

Lemeer S.,et al.J. Proteome Res. 7:1555-1564(2008).

## Images

---



Western blot analysis of lysate from zebra fish muscle tissue lysate, using (DANRE) edc3 Antibody (Center)(Cat. #Azb18719a). Azb18719a was diluted at 1:1000. A goat anti-rabbit IgG H&L(HRP) at 1:10000 dilution was used as the secondary antibody. Lysate at 20ug.

Please note: All products are 'FOR RESEARCH USE ONLY. NOT FOR USE IN DIAGNOSTIC OR THERAPEUTIC PROCEDURES'.