

(DANRE)edf1Antibody(C-term)

Purified Rabbit Polyclonal Antibody (Pab)

Catalog # Azb18721c

Product Information

| | |
|-------------------|-------------------------|
| Application | WB, E |
| Primary Accession | Q6PBY3 |
| Reactivity | Human, Zebrafish, Mouse |
| Host | Rabbit |
| Clonality | Polyclonal |
| Isotype | Rabbit IgG |
| Clone Names | RB44748 |
| Calculated MW | 16075 |

Additional Information

| | |
|--------------------|---|
| Gene ID | 793036 |
| Other Names | Endothelial differentiation-related factor 1 homolog, EDF-1, edf1 |
| Target/Specificity | This (DANRE)edf1 antibody is generated from a rabbit immunized with a KLH conjugated synthetic peptide between 122-146 amino acids from the C-terminal region of (DANRE)edf1. |
| Dilution | WB~~1:1000 E~~Use at an assay dependent concentration. |
| Format | Purified polyclonal antibody supplied in PBS with 0.09% (W/V) sodium azide. This antibody is purified through a protein A column, followed by peptide affinity purification. |
| Storage | Maintain refrigerated at 2-8°C for up to 2 weeks. For long term storage store at -20°C in small aliquots to prevent freeze-thaw cycles. |
| Precautions | (DANRE)edf1Antibody(C-term) is for research use only and not for use in diagnostic or therapeutic procedures. |

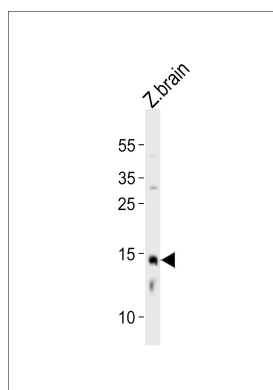
Protein Information

| | |
|-------------------|---------------------------------------|
| Name | edf1 |
| Function | Probable transcriptional coactivator. |
| Cellular Location | Nucleus. |

Background

Probable transcriptional coactivator (By similarity).

Images



Western blot analysis of lysate from zebra fish brain tissue, using (DANRE)edf1 Antibody (C-term)(Cat. #Azb18721c). Azb18721c was diluted at 1:1000. A goat anti-rabbit IgG H&L(HRP) at 1:10000 dilution was used as the secondary antibody. Lysate at 20ug.

Please note: All products are 'FOR RESEARCH USE ONLY. NOT FOR USE IN DIAGNOSTIC OR THERAPEUTIC PROCEDURES'.