

(DANRE) sdhb Antibody

Purified Rabbit Polyclonal Antibody (Pab)

Catalog # Azb18722a

Product Information

Application	WB, E
Primary Accession	A5PL98
Reactivity	Human, Rat, Mouse, Zebrafish
Host	Rabbit
Clonality	Polyclonal
Isotype	Rabbit IgG
Clone Names	RB45552
Calculated MW	31740

Additional Information

Gene ID	562149
Other Names	Succinate dehydrogenase [ubiquinone] iron-sulfur subunit, mitochondrial, Iron-sulfur subunit of complex II, Ip, sdhb
Target/Specificity	This (DANRE) sdhb antibody is generated from a rabbit immunized with a KLH conjugated synthetic peptide between 147-182 amino acids from the region of (DANRE) sdhb.
Dilution	WB~~1:1000 E~~Use at an assay dependent concentration.
Format	Purified polyclonal antibody supplied in PBS with 0.09% (W/V) sodium azide. This antibody is purified through a protein A column, followed by peptide affinity purification.
Storage	Maintain refrigerated at 2-8°C for up to 2 weeks. For long term storage store at -20°C in small aliquots to prevent freeze-thaw cycles.
Precautions	(DANRE) sdhb Antibody is for research use only and not for use in diagnostic or therapeutic procedures.

Protein Information

Name	sdhb
Function	Iron-sulfur protein (IP) subunit of the succinate dehydrogenase complex (mitochondrial respiratory chain complex II), responsible for transferring electrons from succinate to ubiquinone (coenzyme Q) (By similarity). SDH also oxidizes malate to the non- canonical enol form of oxaloacetate, enol-oxaloacetate. Enol- oxaloacetate, which is a potent inhibitor of the

succinate dehydrogenase activity, is further isomerized into keto-oxaloacetate (By similarity).

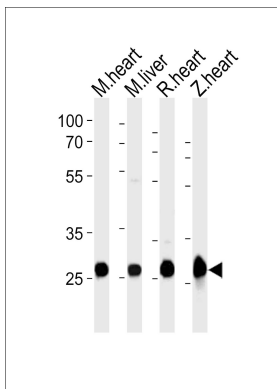
Cellular Location

Mitochondrion inner membrane {ECO:0000250 | UniProtKB:Q9YHT2};
Peripheral membrane protein {ECO:0000250 | UniProtKB:Q9YHT2}; Matrix side {ECO:0000250 | UniProtKB:Q9YHT2}

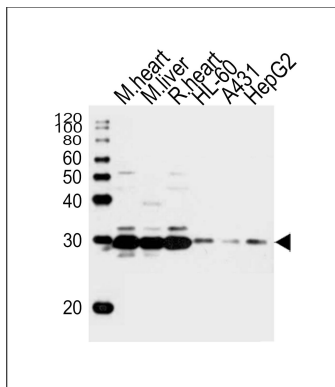
Background

Iron-sulfur protein (IP) subunit of succinate dehydrogenase (SDH) that is involved in complex II of the mitochondrial electron transport chain and is responsible for transferring electrons from succinate to ubiquinone (coenzyme Q) (By similarity).

Images



Western blot analysis of lysates from mouse heart, mouse liver, rat heart, zebra fish heart tissue lysate (from left to right), using (DANRE) sdhb Antibody(Cat. #Azb18722a). Azb18722a was diluted at 1:1000 at each lane. A goat anti-rabbit IgG H&L(HRP) at 1:10000 dilution was used as the secondary antibody.



Western blot analysis of lysates from mouse heart, mouse liver, rat heart tissue, HL-60, A431, HepG2 cell line (from left to right), using (DANRE) sdhb Antibody(Cat. #Azb18722a). Azb18722a was diluted at 1:1000 at each lane. A goat anti-rabbit IgG H&L(HRP) at 1:10000 dilution was used as the secondary antibody.

Please note: All products are 'FOR RESEARCH USE ONLY. NOT FOR USE IN DIAGNOSTIC OR THERAPEUTIC PROCEDURES'.