

## (DANRE) shq1 Antibody (C-term)

Purified Rabbit Polyclonal Antibody (Pab)

Catalog # Azb19124b

### Product Information

---

Application	WB, E
Primary Accession	<a href="#">A1L1R0</a>
Reactivity	Zebrafish
Host	Rabbit
Clonality	polyclonal
Isotype	Rabbit IgG
Clone Names	RB50194
Calculated MW	67499

### Additional Information

---

Other Names	Protein SHQ1 homolog, shq1
Target/Specificity	This DANRE shq1 antibody is generated from a rabbit immunized with a KLH conjugated synthetic peptide between 573-605 amino acids from the C-terminal region of DANRE shq1.
Dilution	WB~~1:2000 E~~Use at an assay dependent concentration.
Format	Purified polyclonal antibody supplied in PBS with 0.09% (W/V) sodium azide. This antibody is purified through a protein A column, followed by peptide affinity purification.
Storage	Maintain refrigerated at 2-8°C for up to 2 weeks. For long term storage store at -20°C in small aliquots to prevent freeze-thaw cycles.
Precautions	(DANRE) shq1 Antibody (C-term) is for research use only and not for use in diagnostic or therapeutic procedures.

### Protein Information

---

Name	shq1
Function	Required for the quantitative accumulation of H/ACA ribonucleoproteins (RNPs).
Cellular Location	Cytoplasm, cytosol. Nucleus, nucleoplasm

### Background

---

Required for the quantitative accumulation of H/ACA ribonucleoproteins (RNPs).

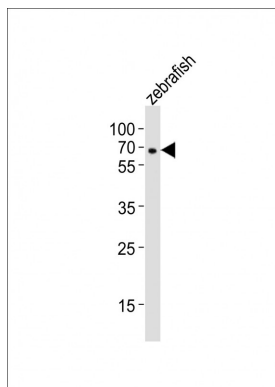
## References

---

Lemeer S., et al. J. Proteome Res. 7:1555-1564(2008).

## Images

---



Anti-shq1 Antibody (C-term) at 1:2000 dilution + zebrafish lysates Lysates/proteins at 20 µg per lane. Secondary Goat Anti-Rabbit IgG, (H+L), Peroxidase conjugated at 1/10000 dilution Predicted band size : 67 kDa Blocking/Dilution buffer: 5% NFDM/TBST.

Please note: All products are 'FOR RESEARCH USE ONLY. NOT FOR USE IN DIAGNOSTIC OR THERAPEUTIC PROCEDURES'.