

# (DANRE) cyfip1 Antibody (Center)

Purified Rabbit Polyclonal Antibody (Pab)

Catalog # Azb19126c

## Product Information

---

Application	WB, E
Primary Accession	<a href="#">Q90YM8</a>
Reactivity	Human, Zebrafish, Mouse
Host	Rabbit
Clonality	polyclonal
Isotype	Rabbit IgG
Clone Names	RB47040
Calculated MW	145174

## Additional Information

---

Gene ID	336613
Other Names	Cytoplasmic FMR1-interacting protein 1 homolog, cyfip1 {ECO:0000312 ZFIN:ZDB-GENE-030131-8557}
Target/Specificity	This DANRE cyfip1 antibody is generated from a rabbit immunized with a KLH conjugated synthetic peptide between 524-558 amino acids from the Central region of DANRE cyfip1.
Dilution	WB~~1:2000 E~~Use at an assay dependent concentration.
Format	Purified polyclonal antibody supplied in PBS with 0.09% (W/V) sodium azide. This antibody is purified through a protein A column, followed by peptide affinity purification.
Storage	Maintain refrigerated at 2-8°C for up to 2 weeks. For long term storage store at -20°C in small aliquots to prevent freeze-thaw cycles.
Precautions	(DANRE) cyfip1 Antibody (Center) is for research use only and not for use in diagnostic or therapeutic procedures.

## Protein Information

---

Name	cyfip1 {ECO:0000312 ZFIN:ZDB-GENE-030131-8557}
Function	Involved in formation of membrane ruffles and lamellipodia protrusions and in axon outgrowth. Binds to F-actin but not to RNA (By similarity).
Cellular Location	Cytoplasm {ECO:0000250 UniProtKB:Q7TMB8}. Cytoplasm, perinuclear region {ECO:0000250 UniProtKB:Q7TMB8}. Cell projection, lamellipodium

{ECO:0000250|UniProtKB:Q7TMB8}. Cell projection, ruffle  
{ECO:0000250|UniProtKB:Q7TMB8}. Synapse, synaptosome  
{ECO:0000250|UniProtKB:Q7TMB8}. Note=Highly expressed in the perinuclear region (By similarity). Enriched in synaptosomes (By similarity). Also enriched in membrane ruffles and at the tips of lamellipodia (By similarity). {ECO:0000250|UniProtKB:Q7TMB8}

## Background

---

Involved in formation of membrane ruffles and lamellipodia protrusions and in axon outgrowth. Binds to F-actin but not to RNA (By similarity).

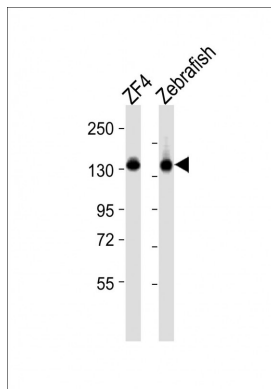
## References

---

Schenck A.,et al.Proc. Natl. Acad. Sci. U.S.A. 98:8844-8849(2001).

## Images

---



All lanes : Anti-cyfip1 Antibody (Center) at 1:2000 dilution  
Lane 1: ZF4 whole cell lysates Lane 2: Zebrafish lysates  
Lysates/proteins at 20 µg per lane. Secondary Goat Anti-Rabbit IgG, (H+L), Peroxidase conjugated at 1/10000 dilution Predicted band size : 145 kDa Blocking/Dilution buffer: 5% NFDM/TBST.

Please note: All products are 'FOR RESEARCH USE ONLY. NOT FOR USE IN DIAGNOSTIC OR THERAPEUTIC PROCEDURES'.