

## (DANRE) stk10 Antibody (Center)

Purified Rabbit Polyclonal Antibody (Pab)

Catalog # Azb19128c

### Product Information

---

Application	WB, E
Primary Accession	<a href="#">Q7SY52</a>
Reactivity	Zebrafish
Host	Rabbit
Clonality	polyclonal
Isotype	Rabbit IgG
Clone Names	RB50040
Calculated MW	113687

### Additional Information

---

Gene ID	394108
Other Names	Serine/threonine-protein kinase 10, stk10
Target/Specificity	This DANRE stk10 antibody is generated from a rabbit immunized with a KLH conjugated synthetic peptide between 342-376 amino acids from the Central region of DANRE stk10.
Dilution	WB~~1:2000 E~~Use at an assay dependent concentration.
Format	Purified polyclonal antibody supplied in PBS with 0.05% (V/V) Proclin 300. This antibody is purified through a protein A column, followed by peptide affinity purification.
Storage	Maintain refrigerated at 2-8°C for up to 2 weeks. For long term storage store at -20°C in small aliquots to prevent freeze-thaw cycles.
Precautions	(DANRE) stk10 Antibody (Center) is for research use only and not for use in diagnostic or therapeutic procedures.

### Protein Information

---

Name	stk10
Function	May act as a polo kinase kinase by mediating phosphorylation of plk1.
Cellular Location	Cell membrane; Peripheral membrane protein

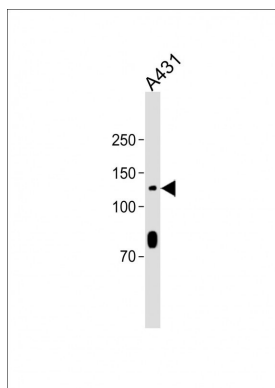
### Background

---

May act as a polo kinase kinase by mediating phosphorylation of plk1.

## Images

---



All lanes: Anti-(DANRE) stk10 Antibody (Center) at 1:2000 dilution + A431 whole cell lysate Lysates/proteins at 20 µg per lane. Secondary: Goat Anti-Rabbit IgG, (H+L), Peroxidase conjugated (ASP1615) at 1/15000 dilution. Observed band size: 125 KDa Blocking/Dilution buffer: 5% NFDM/TBST.

Please note: All products are 'FOR RESEARCH USE ONLY. NOT FOR USE IN DIAGNOSTIC OR THERAPEUTIC PROCEDURES'.