

(DANRE) eng2b Antibody (N-term)

Purified Rabbit Polyclonal Antibody (Pab)

Catalog # Azb21569a

Product Information

Application	WB, E
Primary Accession	P31533
Reactivity	Zebrafish
Host	Rabbit
Clonality	polyclonal
Isotype	Rabbit IgG
Clone Names	RB48044
Calculated MW	29485

Additional Information

Gene ID	30238
Other Names	Homeobox protein engrailed-2b, Homeobox protein en-2b, Zf-En-1, eng2b, eng-3, eng3, zf-en-1
Target/Specificity	This DANRE eng2b antibody is generated from a rabbit immunized with a KLH conjugated synthetic peptide between 1-35 amino acids from the N-terminal region of DANRE eng2b.
Dilution	WB~~1:2000 E~~Use at an assay dependent concentration.
Format	Purified polyclonal antibody supplied in PBS with 0.09% (W/V) sodium azide. This antibody is purified through a protein A column, followed by peptide affinity purification.
Storage	Maintain refrigerated at 2-8°C for up to 2 weeks. For long term storage store at -20°C in small aliquots to prevent freeze-thaw cycles.
Precautions	(DANRE) eng2b Antibody (N-term) is for research use only and not for use in diagnostic or therapeutic procedures.

Protein Information

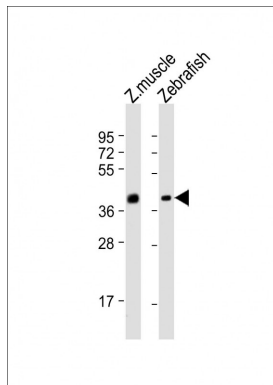
Name	eng2b
Synonyms	eng-3, eng3, zf-en-1
Cellular Location	Nucleus.

References

Ekker M.,et al.Development 116:1001-1010(1992).

Holland P.W.H.,et al.FEBS Lett. 277:250-252(1990).

Images



All lanes : Anti-eng2b Antibody (N-term) at 1:2000 dilution
Lane 1: Zebrafish muscle lysate Lane 2: Zebrafish lysate
Lysates/proteins at 20 µg per lane. Secondary Goat
Anti-Rabbit IgG, (H+L), Peroxidase conjugated at 1/10000
dilution. Predicted band size : 29 kDa Blocking/Dilution
buffer: 5% NFDM/TBST.

Please note: All products are 'FOR RESEARCH USE ONLY. NOT FOR USE IN DIAGNOSTIC OR THERAPEUTIC PROCEDURES'.