

(DANRE) msxc Antibody (Center)

Purified Rabbit Polyclonal Antibody (Pab)

Catalog # Azb21570c

Product Information

Application	WB, E
Primary Accession	Q01703
Reactivity	Zebrafish
Host	Rabbit
Clonality	polyclonal
Isotype	Rabbit IgG
Clone Names	RB48033
Calculated MW	30186

Additional Information

Other Names	Homeobox protein MSH-C, msxc, msh-c
Target/Specificity	This DANRE msxc antibody is generated from a rabbit immunized with a KLH conjugated synthetic peptide between 123-157 amino acids from the Central region of DANRE msxc.
Dilution	WB~~1:2000 E~~Use at an assay dependent concentration.
Format	Purified polyclonal antibody supplied in PBS with 0.09% (W/V) sodium azide. This antibody is purified through a protein A column, followed by peptide affinity purification.
Storage	Maintain refrigerated at 2-8°C for up to 2 weeks. For long term storage store at -20°C in small aliquots to prevent freeze-thaw cycles.
Precautions	(DANRE) msxc Antibody (Center) is for research use only and not for use in diagnostic or therapeutic procedures.

Protein Information

Name	msxc
Synonyms	msh-c
Function	Involved in the development of the inner ear.
Cellular Location	Nucleus.

Background

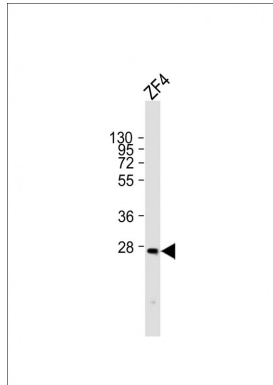
Involved in the development of the inner ear.

References

Ekker M.,et al.Neuron 9:27-35(1992).

Holland P.W.H.,et al.Gene 98:253-257(1991).

Images



Anti-msxc Antibody (Center) at 1:2000 dilution + ZF4 whole cell lysate Lysates/proteins at 20 µg per lane. Secondary Goat Anti-Rabbit IgG, (H+L), Peroxidase conjugated at 1/10000 dilution. Predicted band size : 30 kDa Blocking/Dilution buffer: 5% NFDM/TBST.

Please note: All products are 'FOR RESEARCH USE ONLY. NOT FOR USE IN DIAGNOSTIC OR THERAPEUTIC PROCEDURES'.