

# Elk-1 Polyclonal Antibody

Catalog # AP69709

## Product Information

---

<b>Application</b>	WB, IHC-P, IF
<b>Primary Accession</b>	<a href="#">P19419</a>
<b>Reactivity</b>	Human, Mouse, Rat
<b>Host</b>	Rabbit
<b>Clonality</b>	Polyclonal
<b>Calculated MW</b>	44888

## Additional Information

---

<b>Gene ID</b>	2002
<b>Other Names</b>	ELK1; ETS domain-containing protein Elk-1
<b>Dilution</b>	WB~~Western Blot: 1/500 - 1/2000. Immunohistochemistry: 1/100 - 1/300. Immunofluorescence: 1/200 - 1/1000. ELISA: 1/5000. Not yet tested in other applications. IHC-P~~N/A IF~~1:50~200
<b>Format</b>	Liquid in PBS containing 50% glycerol, 0.5% BSA and 0.09% (W/V) sodium azide.
<b>Storage Conditions</b>	-20°C

## Protein Information

---

<b>Name</b>	ELK1 ( <a href="#">HGNC:3321</a> )
<b>Function</b>	Transcription factor that binds to purine-rich DNA sequences (PubMed: <a href="#">10799319</a> , PubMed: <a href="#">7889942</a> ). Forms a ternary complex with SRF and the ETS and SRF motifs of the serum response element (SRE) on the promoter region of immediate early genes such as FOS and IER2 (PubMed: <a href="#">1630903</a> ). Induces target gene transcription upon JNK and MAPK-signaling pathways stimulation (PubMed: <a href="#">7889942</a> ).
<b>Cellular Location</b>	Nucleus.
<b>Tissue Location</b>	Lung and testis.

## Background

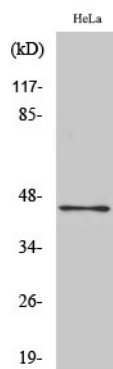
---

Transcription factor that binds to purine-rich DNA sequences. Forms a ternary complex with SRF and the ETS and SRF motifs of the serum response element (SRE) on the promoter region of immediate early genes such as FOS and IER2. Induces target gene transcription upon JNK-signaling pathway stimulation (By

similarity).

## Images

---



Western Blot analysis of various cells using Elk-1 Polyclonal Antibody cells nucleus extracted by Minute TM Cytoplasmic and Nuclear Fractionation kit (SC-003, Inventbiotech, MN, USA).

Please note: All products are 'FOR RESEARCH USE ONLY. NOT FOR USE IN DIAGNOSTIC OR THERAPEUTIC PROCEDURES'.