

# Phospho-LAT (Tyr200) Rabbit mAb

Catalog # AP75667

## Product Information

---

Application	WB
Primary Accession	<a href="#">O43561</a>
Reactivity	Human
Host	Rabbit
Clonality	Monoclonal Antibody
Calculated MW	27930

## Additional Information

---

Gene ID	27040
Other Names	LAT
Dilution	WB~~1/500-1/1000
Format	50mM Tris-Glycine(pH 7.4), 0.15M NaCl, 40%Glycerol, 0.01% sodium azide and 0.05% BSA.
Storage	Store at 4°C short term. Aliquot and store at -20°C long term. Avoid freeze/thaw cycles.

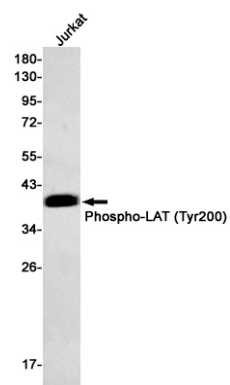
## Protein Information

---

Name	LAT
Function	Required for TCR (T-cell antigen receptor)- and pre-TCR- mediated signaling, both in mature T-cells and during their development (PubMed: <a href="#">23514740</a> , PubMed: <a href="#">25907557</a> ). Involved in FCGR3 (low affinity immunoglobulin gamma Fc region receptor III)-mediated signaling in natural killer cells and FCER1 (high affinity immunoglobulin epsilon receptor)-mediated signaling in mast cells. Couples activation of these receptors and their associated kinases with distal intracellular events such as mobilization of intracellular calcium stores, PKC activation, MAPK activation or cytoskeletal reorganization through the recruitment of PLCG1, GRB2, GRAP2, and other signaling molecules.
Cellular Location	Cell membrane; Single-pass type III membrane protein. Note=Present in lipid rafts
Tissue Location	Expressed in thymus, T-cells, NK cells, mast cells and, at lower levels, in spleen. Present in T-cells but not B-cells (at protein level).

## Images

---



Please note: All products are 'FOR RESEARCH USE ONLY. NOT FOR USE IN DIAGNOSTIC OR THERAPEUTIC PROCEDURES'.