

MCAK Rabbit mAb

Catalog # AP76581

Product Information

Application	WB, ICC
Primary Accession	Q99661
Reactivity	Human
Host	Rabbit
Clonality	Monoclonal Antibody
Calculated MW	81313

Additional Information

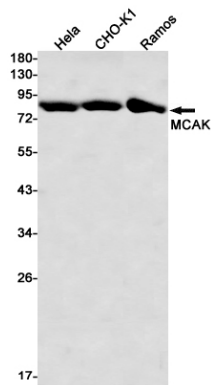
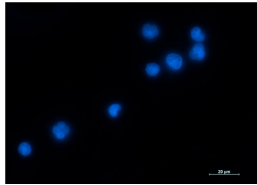
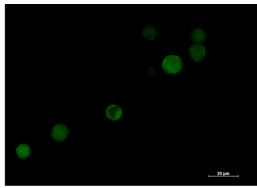
Gene ID	11004
Other Names	KIF2C
Dilution	WB~~1/500-1/1000 ICC~~N/A
Format	Liquid

Protein Information

Name	KIF2C
Synonyms	KNSL6
Function	<p>In complex with KIF18B, constitutes the major microtubule plus-end depolymerizing activity in mitotic cells (PubMed:21820309). Regulates the turnover of microtubules at the kinetochore and functions in chromosome segregation during mitosis (PubMed:19060894). Plays a role in chromosome congression and is required for the lateral to end- on conversion of the chromosome-microtubule attachment (PubMed:23891108).</p>
Cellular Location	<p>Cytoplasm, cytoskeleton. Nucleus {ECO:0000250 UniProtKB:P70096} Chromosome, centromere. Chromosome, centromere, kinetochore. Note=Associates with the microtubule network at the growing distal tip (the plus-end) of microtubules, probably through interaction with MTUS2/TIP150 and MAPRE1 (By similarity). Association with microtubule plus ends is also mediated by interaction with KIF18B. Centromeric localization requires the presence of BUB1 and SGO2. {ECO:0000250 UniProtKB:P70096, ECO:0000269 PubMed:17485487, ECO:0000269 PubMed:21820309}</p>
Tissue Location	<p>Expressed at high levels in thymus and testis, at low levels in small intestine, the mucosal lining of colon, and placenta, and at very low levels in spleen and ovary; expression is not detected in prostate, peripheral blood Leukocytes, heart, brain, lung, liver, skeletal muscle, kidney or pancreas. Isoform 2 is</p>

testis- specific.

Images



Please note: All products are 'FOR RESEARCH USE ONLY. NOT FOR USE IN DIAGNOSTIC OR THERAPEUTIC PROCEDURES'.